

Pipe Collars

Testing

Tested to BS476 Part 22:1987 and other International Standards.
Refer to back cover.

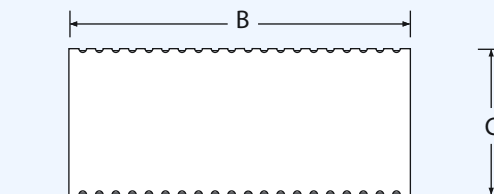
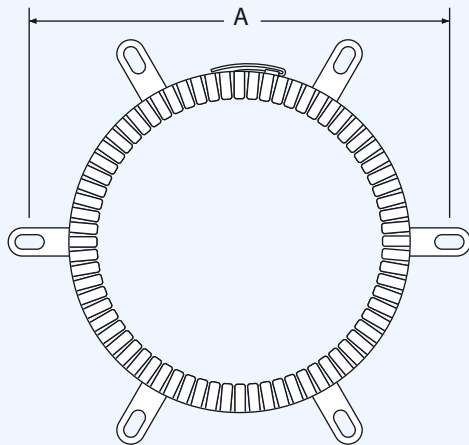
Health and Safety

According to 91/155/EEC Revision No.1.

Important Note

Use Pyroplex® Intumescent Acrylic for residual gaps and penetration face finishing.

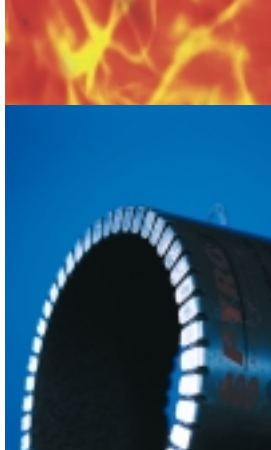
Please refer to table for number of fixing lugs.



Pipe Collars

Part Number	Pipe Outside Diameter (mm)	Diameter over Fixing Holes A (mm)	Collar Outside Diameter B (mm)	Collar Depth C (mm)	Number of Fixing Lugs
PPC25	25	95	38	60	2
PPC32	32	104	41	60	2
PPC40	40	108	52	60	2
PPC48	48	119	59	60	2
PPC55	55	124	74	60	3
PPC68	68	134	84	60	3
PPC82	82	150	100	60	3
PPC110	110	160	134	60	4
PPC125	125	180	148	60	4
PPC135	135	192	158	60	4
PPC160	160	234	200	60	6
PPC200	200	315	255	190	7
PPC250	250	365	305	190	8
PPC315	315	415	345	190	9
PPC350	350	450	390	190	12
PPC400	400	500	440	190	13

All dimensions quoted are for guidance only.



Flexible Seals	1
Rigid Box Seals	2
Hard Seals	4
Glazing Systems	5
Strip	6
Special Extrusions	7
Pipe Collars	8
Pipe Wraps	10
Linear Gap Seal	11
Silicone Sealant	12
Acrylic Sealant	13
Expanding Foam	14
Fire Bags	15
Fire Barrier	16
Intumescent Sheet	17
Electrical Box Fire Pads	17
Smoke/Draught Seals	18
Bottom of Door Seals	19

