

Allproof

'SLIM LINE'

ARCHITECTURAL GRATES & DRAINS

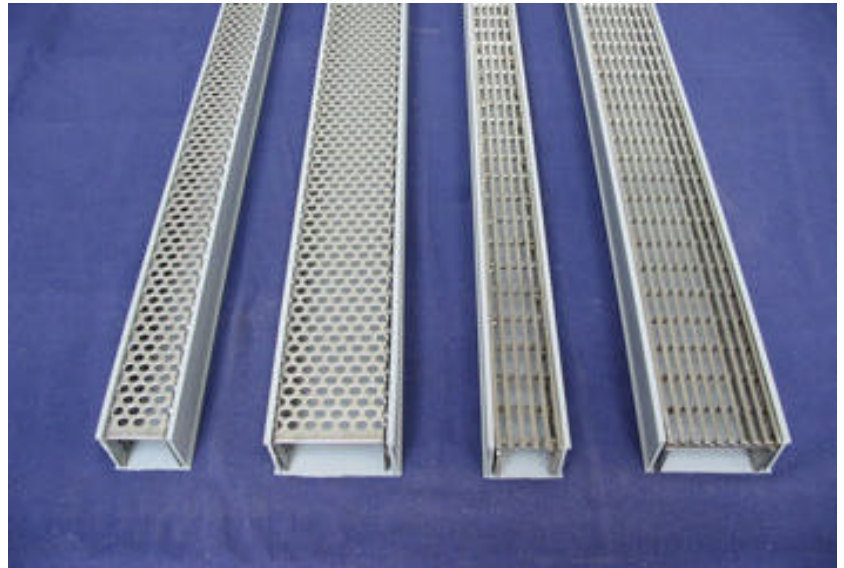
DESIGNERS GUIDE

INDEX 2006

1. Order Form - prices
2. Products 1/2 size Dwg.
3. Standard Installation
4. Special Assembly
5. Slot Drain
6. Bathroom
10. Hydraulic Guide

(see Web site for more designs)

www.allproof.co.nz



38D

65D

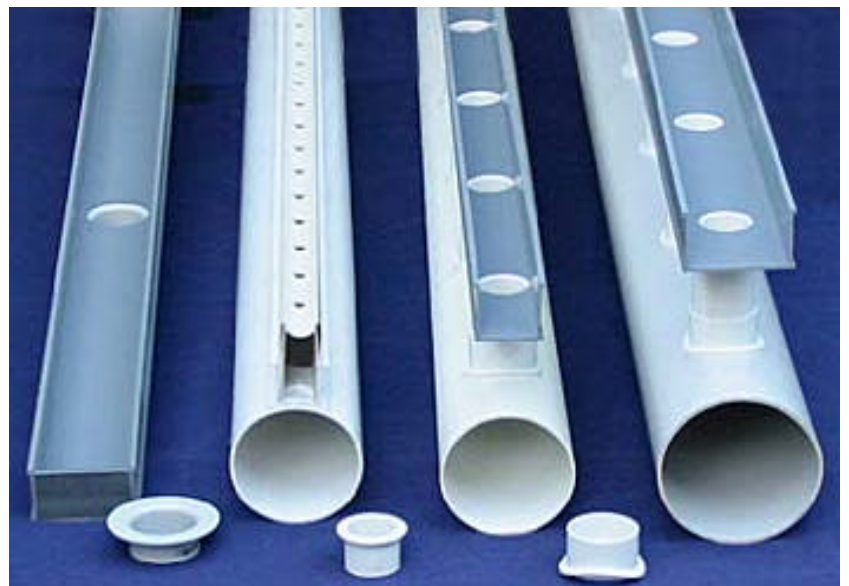
38A

65A



We can assist you with the drainage design...CAD drawings can be downloaded from our Web site and used in your plans.

When specifying, please include the product code and our telephone no.



65G

F40

SD

F32

F100

38G90

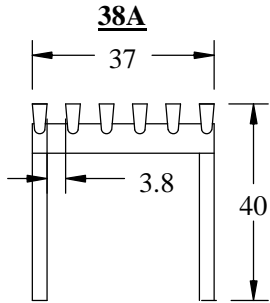
65G100

Winner of DesignMark®, 2004 Australian Design Awards

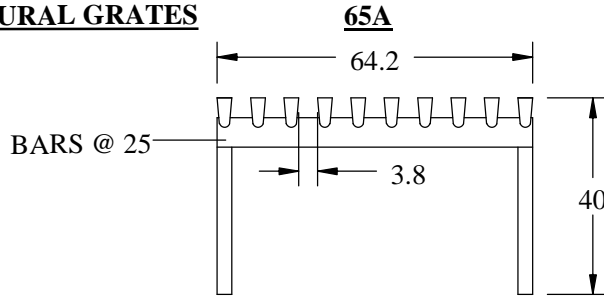
Allproof Industries ph.64 (0) 9 448 5851 fax.64 (0) 9448 5853

9d Piermark Drive, Albany, Auckland New Zealand

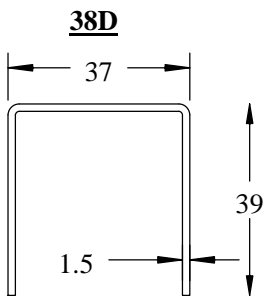
email info@allproof.co.nz



ARCHITECTURAL GRATES

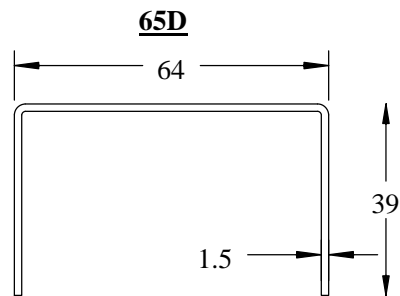


STAINLESS STEEL
316 Wedge Wire
Length 1200mm
38A
65A

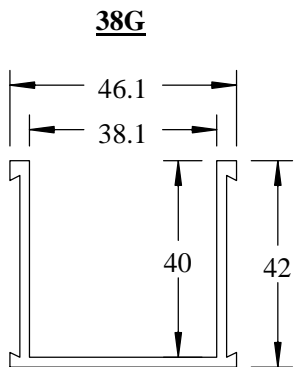


PERFORATED GRATES

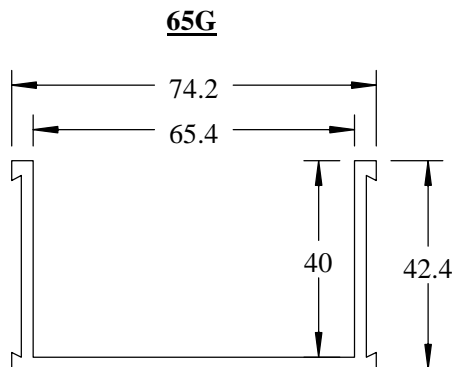
6.35 holes @ 9.55 pitch
40% open area.
INTAKE
38D = 2.5 L/s metre
65D = 4.0 L/s metre



STAINLESS STEEL
316 2B Finish.
Length 1220mm
38D
65D

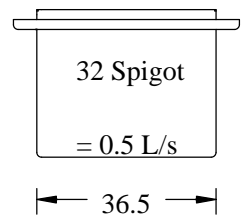


DRAINAGE CHANNELS

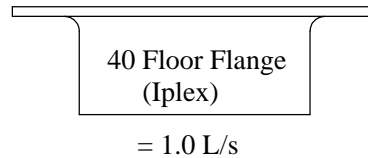


PLASTIC Grey
UV stable UPVC.
Length 3000mm
38G Channel
65G Channel

SPECIAL ASSEMBLY
Channel & Pipe
Length 3000mm



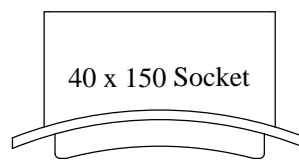
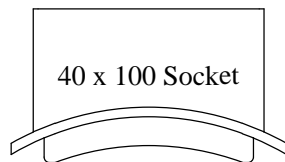
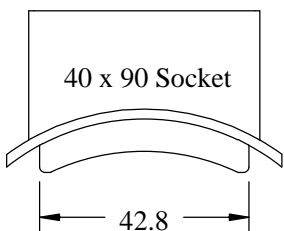
SPIGOTS



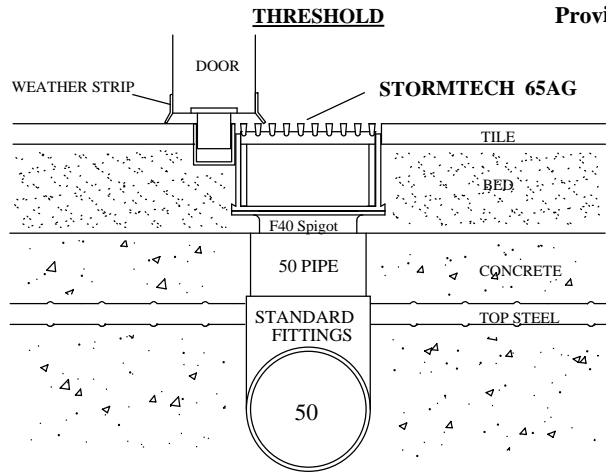
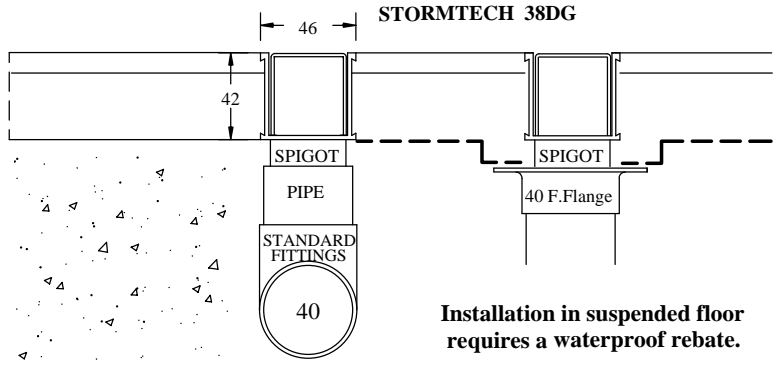
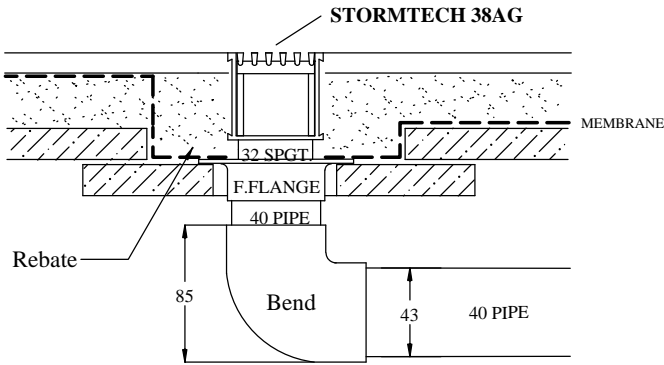
38G 90
38G100
38G150

65G 90
65G100
65G150

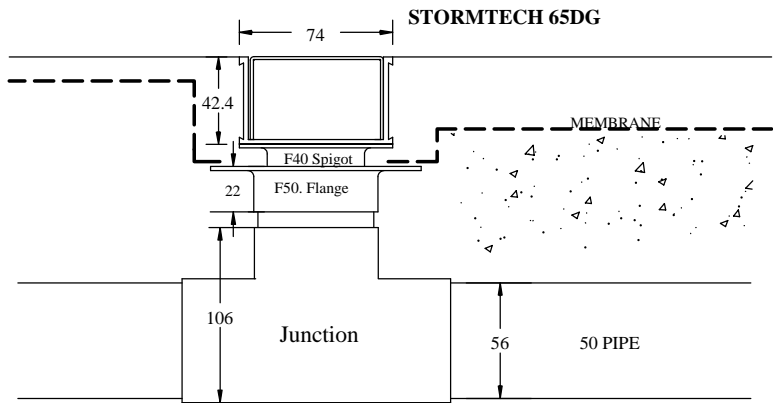
SOCKETS



FITTINGS (UPVC)



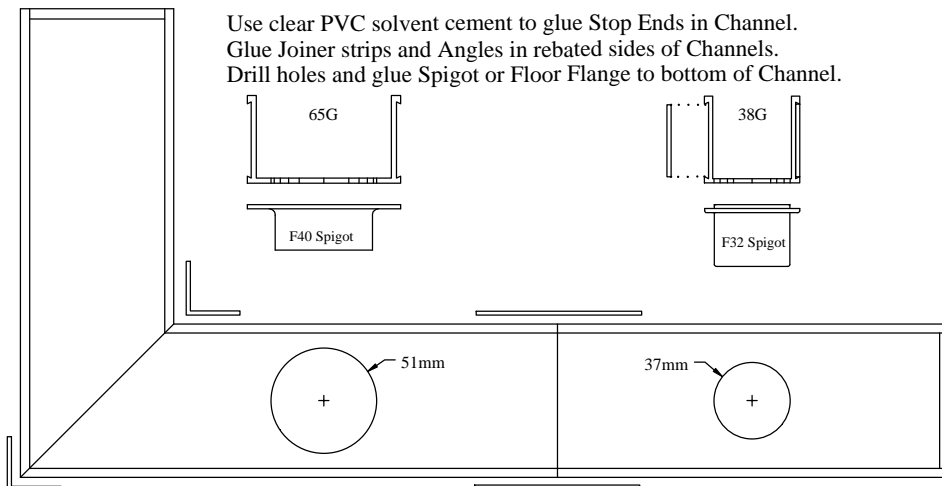
Provide access to drain pipes for cleaning.



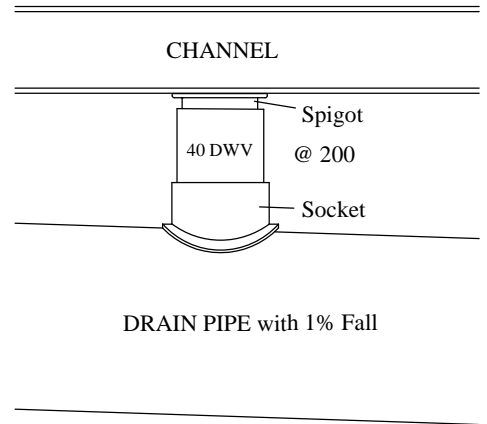
A 32 Spigot fits in a 40 DWV pipe and should drain 0.5 L/s..... We recommend these Spigots every 1m.. not more than 1/2m from end.
 A 40 Flange fits in a 50 DWV pipe and should drain 1.0 L/s..... We recommend these Spigots every 2m.. not more than 1.0m from end.
 The loose fitting Spigots provide an outlet for moisture in the waterproof rebate and allows the Channel to be removed for safe keeping until tiling.

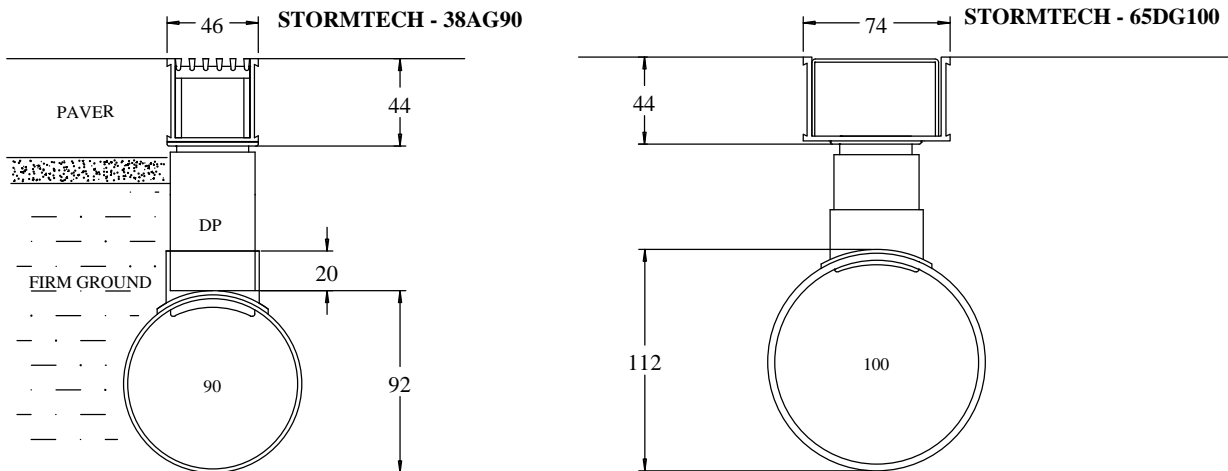
CHANNEL ASSEMBLY

Use clear PVC solvent cement to glue Stop Ends in Channel.
 Glue Joiner strips and Angles in rebated sides of Channels.
 Drill holes and glue spigot or Floor Flange to bottom of Channel.



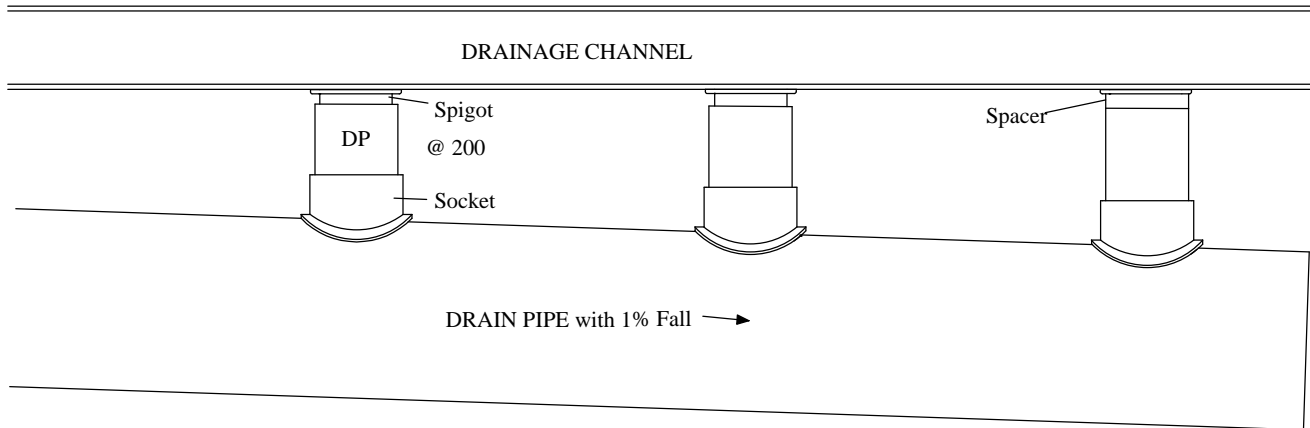
SPECIAL ASSEMBLY





The Channel and Pavers should be laid on a bed of mortar.

Perforated Grates filter out leaves & debris over 6.35mm...This could reduce the fluid intake...Sand & fine particles that accumulate in the Channel should be eroded by water flowing into the Spigots every 200mm... Drain Pipes with 1 % fall require little or NO MAINTENANCE...however ... PROVIDE ACCESS TO DRAIN PIPES for cleaning. Do not use electric eels.
 WHEEL LOAD = concrete/paving strength. SAFE with high heels and fork lift trucks.
 DRAINAGE CAPACITY = 2.5 L/s metre.
 FULL FLOW of Drain Pipes 90 = 6 L/s.; 100 = 10 L/s.; 150 = 30 L/s.



Each 3m length of Drain is supplied with 15 DP's cut from 40DWV pipe ; as per SCHEDULE. (other DP lengths on request)
 Installation normally starts at outlet with longest DP's.

ASSEMBLE 1st. length of Drain ; Glue DP's in pipe Sockets with PVC solvent cement.
 Place Spacer over 1st. Spigot and align with DP. Fit Spigots in DP's.

ASSEMBLE remaining lengths of Drain. Cut last Drain to length required.
 CUT Channels or drain pipes, so that Channels butt together..Join pipes with standard fittings.
 POSITION Drains in trench, install Grates (or timber form).
 GLUE Joiners in rebated sides of Channels .(x) Glue Stop Ends in Channel .
 ADJUST to string line and secure Channel to DP's with glue every metre. (x).
 (x) Do not glue if Channels are to be removed , for safe keeping , until needed in topping.
 COVER Grates with tape..Installation MUST BE SECURE or it will move when concreting.
 HANDLE WITH CARE. Spigits and Sockets can be broken off..(repair with solvent cement)
 SUNLIGHT may cause Drains to bend before they are installed.

SCHEDULE				
DRAIN	LENGTH	5DP	5DP	5DP
1	3m	20mm	30mm	40mm
2	3m	50	60	70
3	3m	80	90	100
4	3m	110	120	130
5	3m	140	150	160
6	3m	170	180	190
7	3m	200	210	220
8	3m	230	240	250
				Spacer 10mm

DIY We can supply the Grates, Channels and our special fittings.
 You supply the drain pipes and make your own Special Assembly.

DRAIN FORM 3m long, heavy duty UPVC.
 with 20 slots (23 x 130) into pipe.

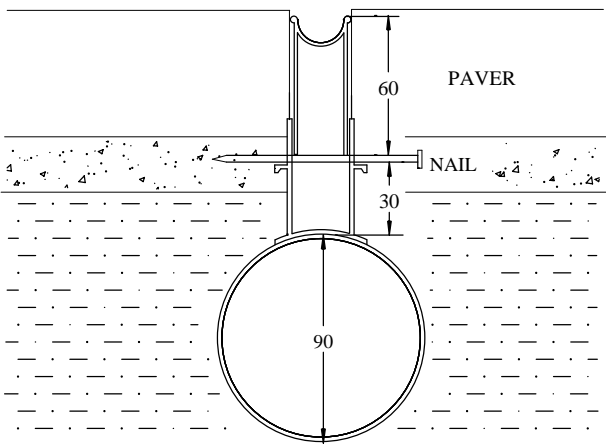
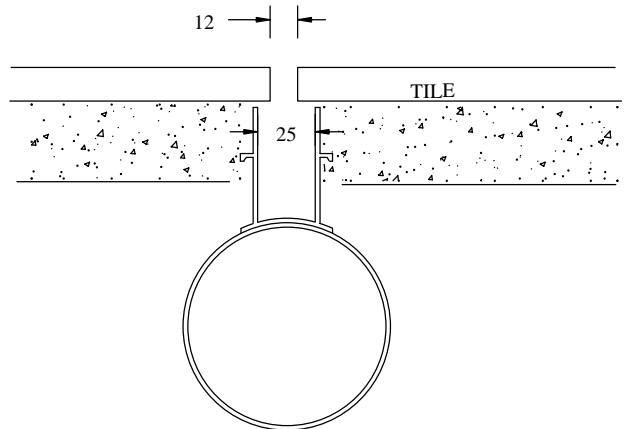
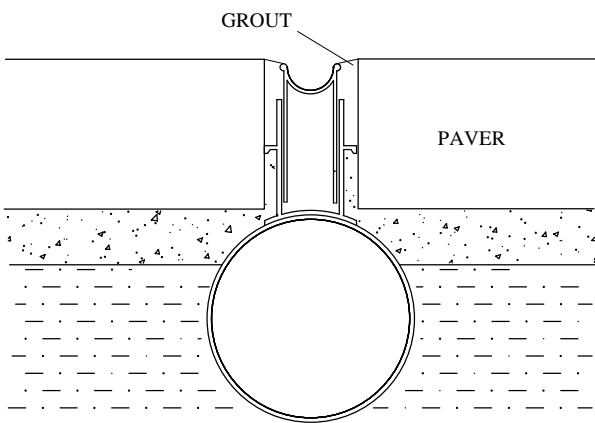
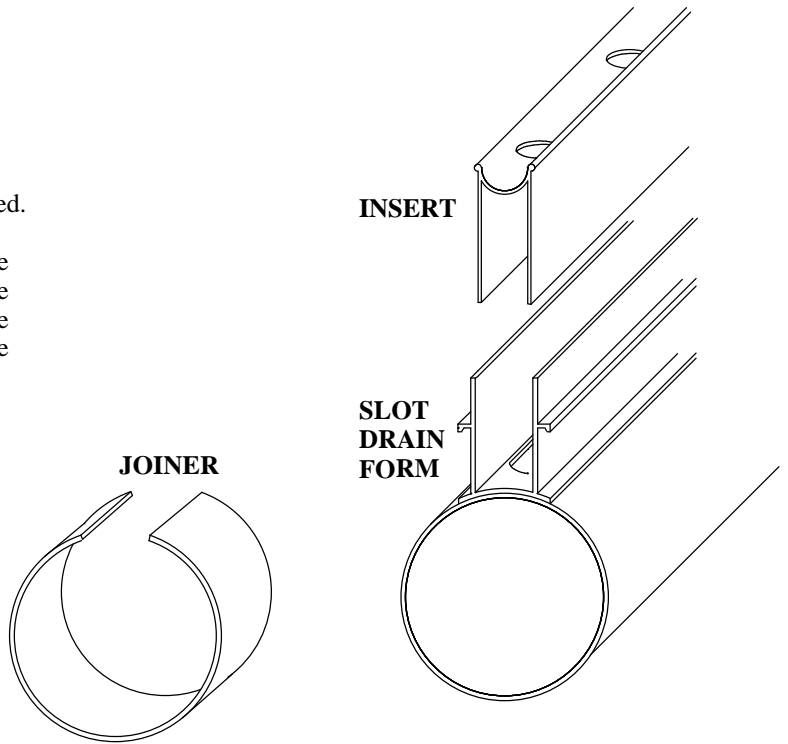
INSERT colour beige, UV stable UPVC.
 Drill holes with dowel bit or pre-drilled.

INTAKE 10mm holes @ 50mm= 0.7 L/s. metre
 13mm holes @ 50mm= 1.0 L/s. metre
 12mm Open slot = 2.0 L/s. metre
 25mm Open slot = 4.0 L/s. metre

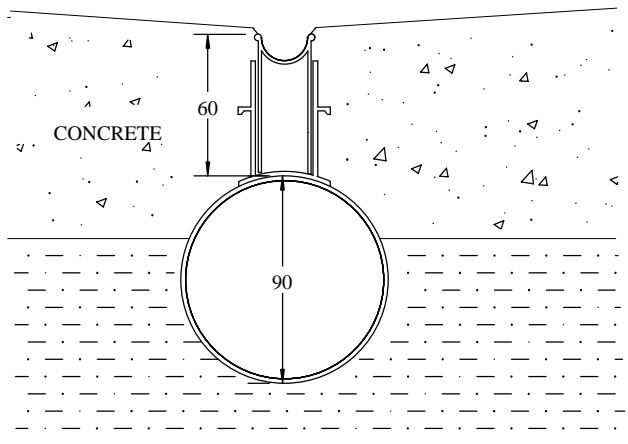
FULL FLOW 6 litres per second.

WHEEL LOAD = Concrete / Paving strength.

1. Glue joiner around pipes & secure with tie wire.
2. Use standard 90mm pipe fittings for bends etc.
3. Provide access to drain pipe for cleaning.
4. Allow 5mm expansion gap, between Inserts.
5. Secure drain, or it will float & move when concreting.
6. Lay pavers hard up against Insert, on mortar bed.
7. Finish concrete/paving 2mm above Insert.



FIRM GROUND

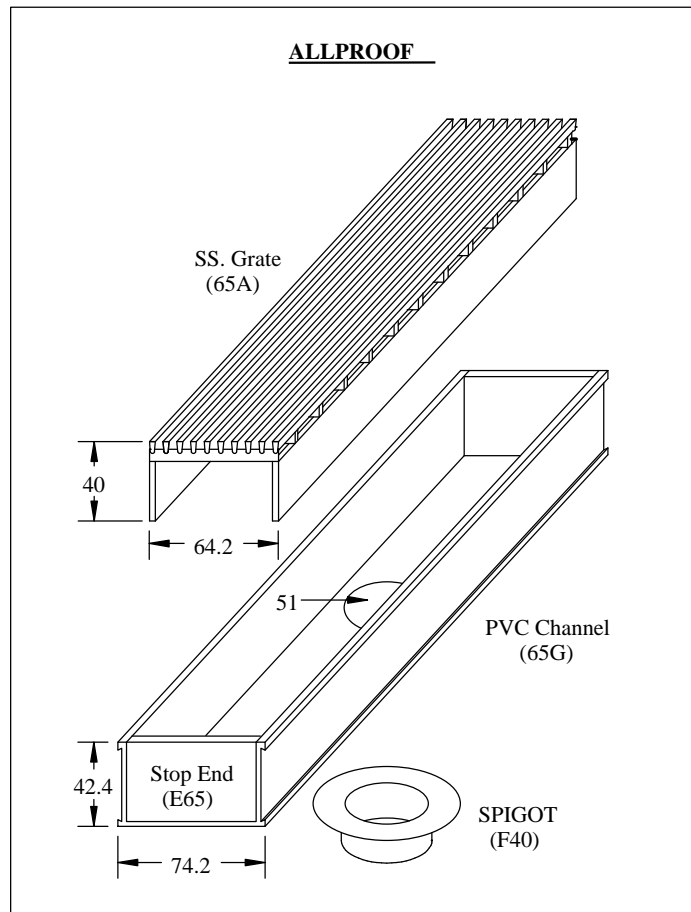
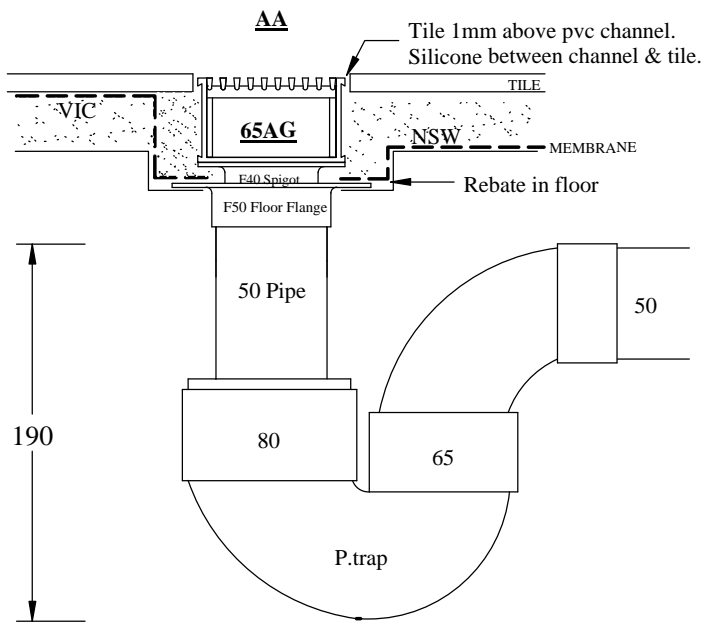
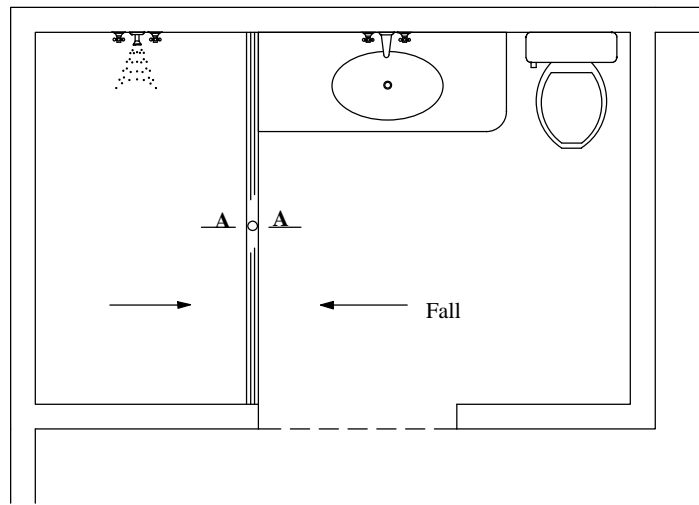
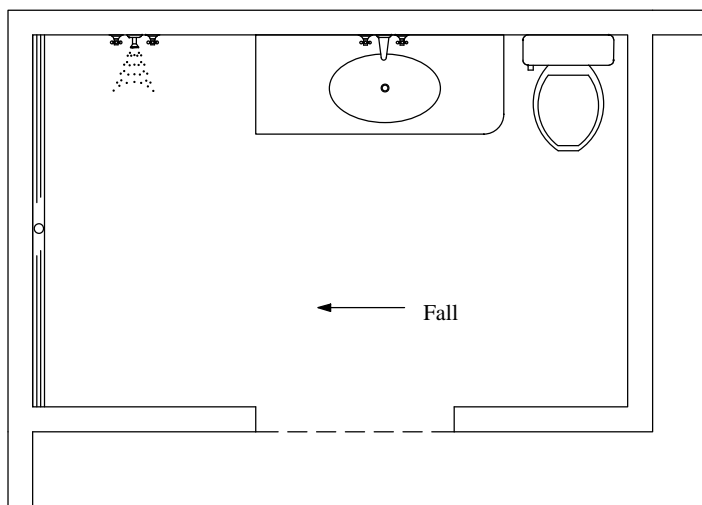


BATHROOM 65AG

ALLPROOF

ph. 64 9 448 5851

fax. 64 9 448 5853



This design conforms with Plumbing Code AS3500 page 41, table 4.6 note. Shower outlets may be used as floor waste gullies.

The loose fitting Spigot provides an outlet for moisture in the waterproof rebate and allows the Channel to be removed for safe keeping until tiling.

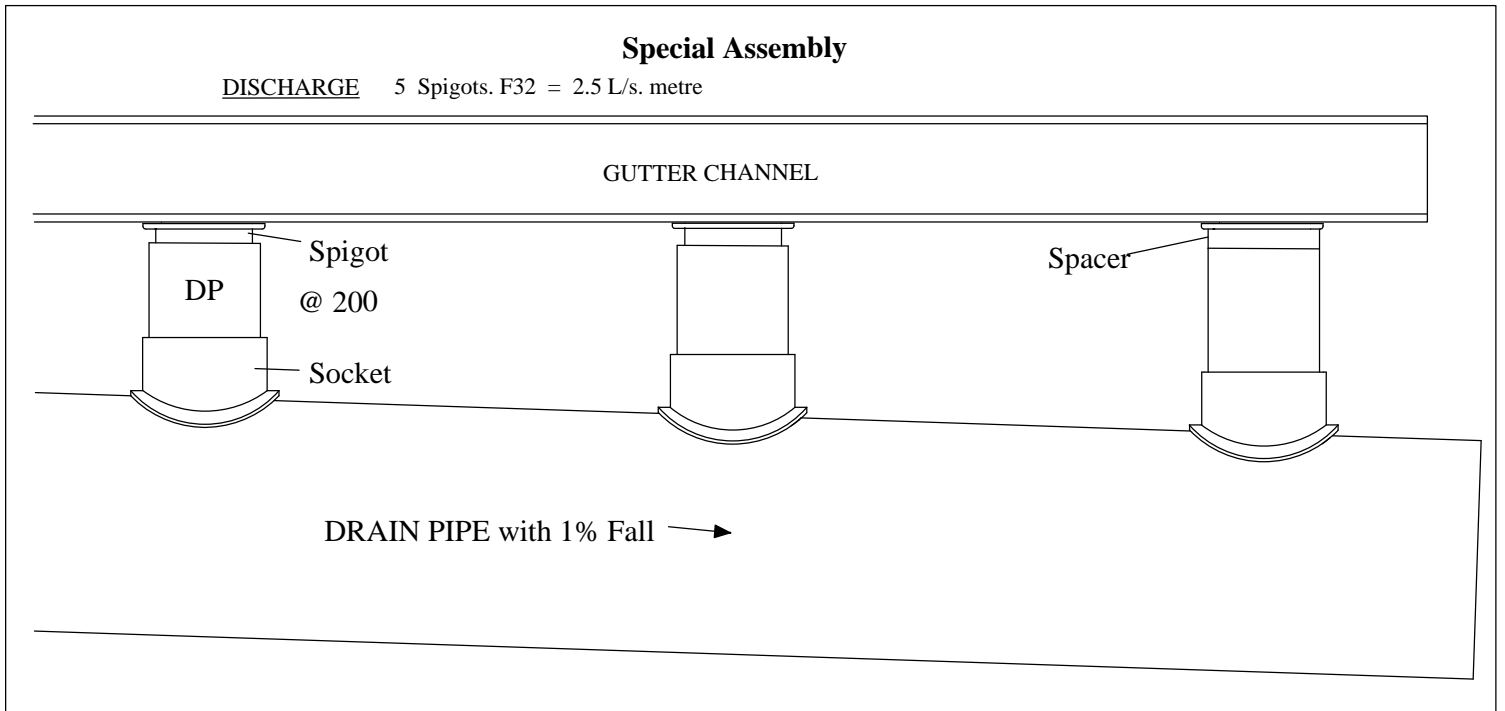
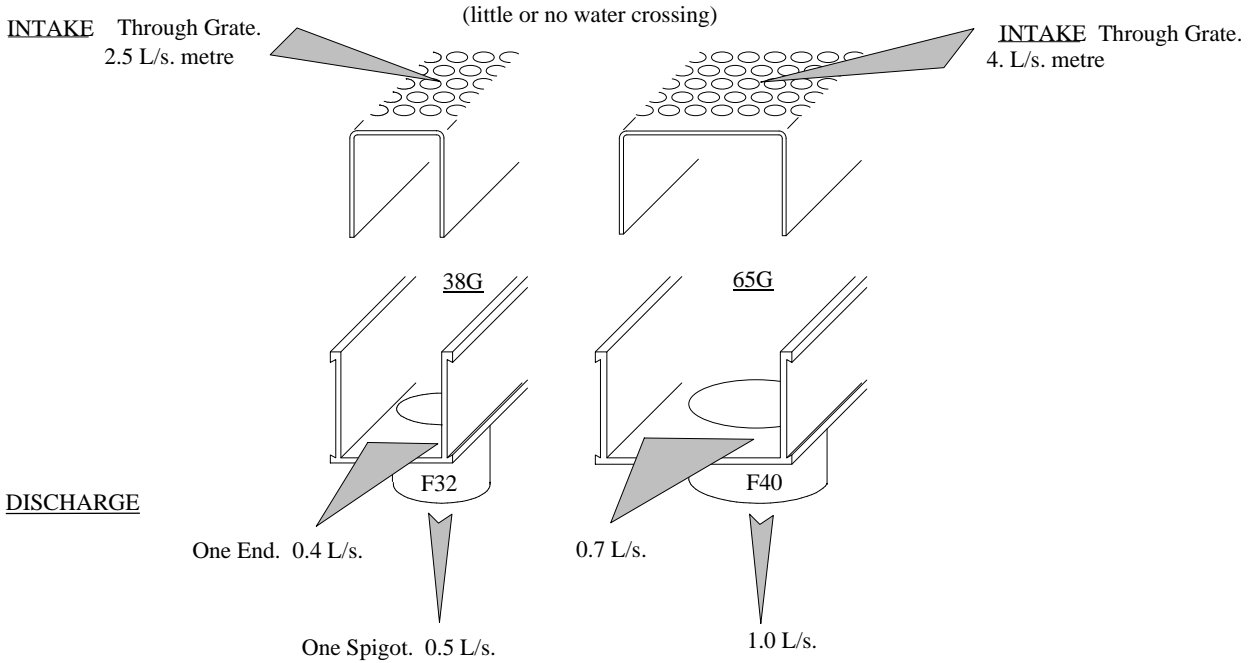
The F40 Spigot fits in a 50DWV pipe and should drain 1 L/s

One bathroom tap delivers 0.5 L/s. approx.

Drill 51mm hole and glue Spigot to bottom of Channel with clear PVC solvent cement.

Install the P.trap & fittings as per the Plumbing Code of Australia AS3500.





Drain Pipes (with 1% fall) 40mm = 0.7 L/s. 50 = 1.5 65 = 2.5 90 = 6 100 = 10 150 = 30. L/s. discharge.

$\frac{\text{AREA}}{3600} \times \text{RAINFALL} = \text{L/s.}$ eg. $\frac{18\text{m}^2}{3600} \times 200\text{mm/hr.} = 1 \text{ L/s.}$

One Bathroom Tap delivers 0.5 L/s.

Brisbane 20 year = 239mm/hr. 100 year = 312mm/hr. rainfall.
 Sydney " = 212 " " = 277 "
 Melbourne " = 91 " " = 117 "

NOTE This is only a guide.