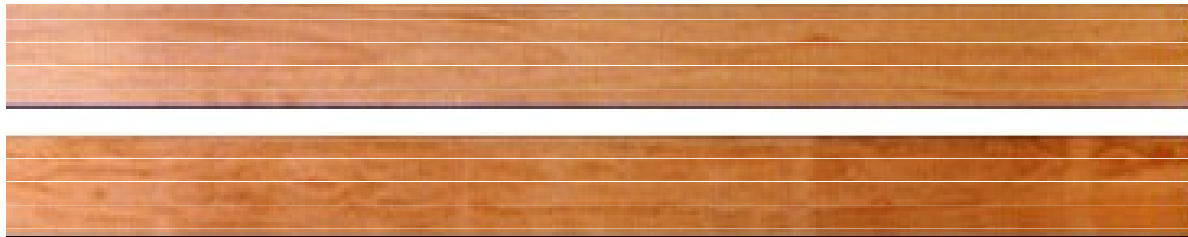


# Visual Grades Appearance Timber

---

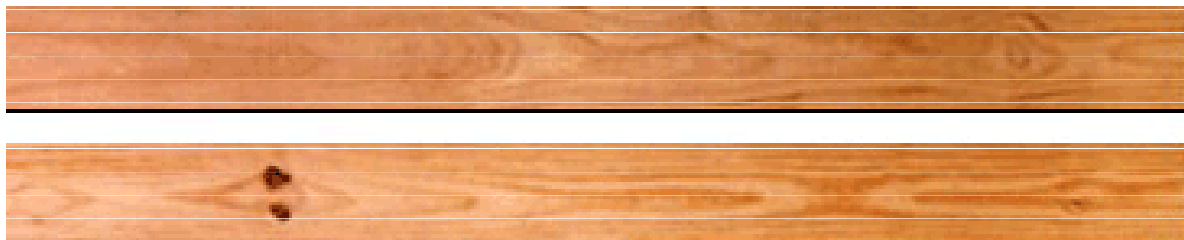
## - No.1 Clears

Clear both faces and edges no knots. Suitable for mouldings, turnery and furniture. Especially where long length clear wood is required



## - No.2 Clears

Clear 1 face 1 edge. Suitable when two clear faces are not required eg table tops and panelling.

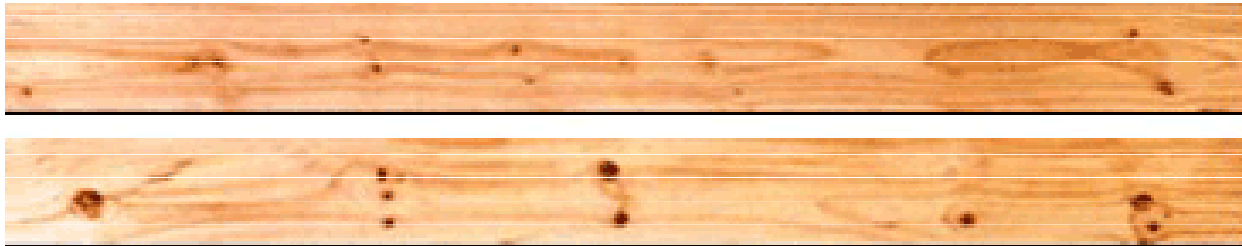


# Visual Grades Appearance Timber

---

- Dressing Grade

Small tight knot grade suitable for high quality knotty furniture and panelling



- Standard/Merchantable Grade

Utility knotty grade carrying larger characteristics than furniture grade. Suitable for budget furniture, panelling, shelving and fencing

