



EXTERNAL SIDING BOARD



Timber look-alike with the strength and durability of fibre cement

PRIMAplank™

PRODUCT INFORMATION

PRIMAplank™ is an autoclaved cellulose fibre reinforced cement siding manufactured in accordance with AS/NZS 2908.2 Cellulose Cement Products: Flat sheets.

Manufactured from Portland cement, cellulose fibre, finely ground sand and water, **PRIMAplank™** has become extremely popular when a relatively maintenance free timber planking appearance is desired.

In the current residential building construction, **PRIMAplank™** satisfies the vast array of building configurations and designs.

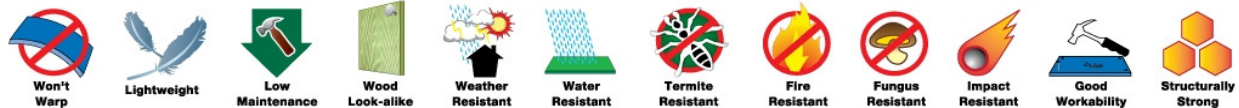
Durability, flexibility and creativity are among the basic characteristics which **PRIMAplank™** offers. These attributes are derived from a combination of the strength of concrete, durability of fibre cement and beauty of real wood.

PRIMAplank™ is a 7.5mm thick siding board and is available in 3 profiles, namely **PRIMAplank™** Woodgrain, **PRIMAplank™** Smooth and **PRIMAplank™** Cedar.

APPLICATIONS

PRIMAplank™ is designed for external wall & gable end cladding applications for traditional timber look and to add character and depth to flat mundane surfaces. Additionally, **PRIMAplank™** makes a perfect match for fascia board around your roof perimeter.

FEATURES AND BENEFITS



PRIMAplank™ EXTERNAL CLADDING

FRAMING CONSTRUCTION

PRIMAplank™ must be supported at 600mm maximum centres. The minimum stud face width shall be as follow:

- Timber framing - 50mm
- Steel framing - 35mm

When on-stud jointing is preferred, stud face width must be increased to provide for adequate edge fixing distance.

FIXING

PRIMAplank™ is normally applied horizontally with a minimum of 25mm overlap. When applied onto timber framing, **PRIMAplank™** must be nailed through both thicknesses. Framing timber should be thoroughly dried and selected to minimize shrinkage when planks are installed. Refer to Figure 2.

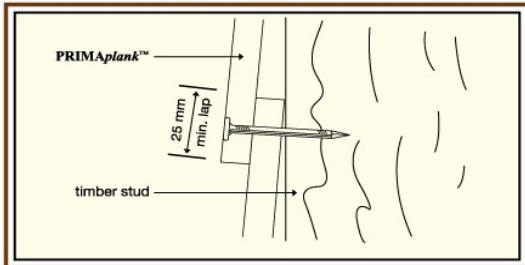


Figure 2: Fixing To Timber Frame

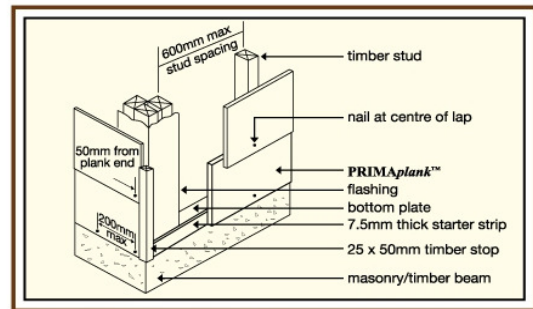


Figure 1: Horizontal Planking

Steel framing must be fabricated from galvanised light gauge steel of a minimum 0.55mm to 1.55mm base metal thickness. Drive screw through the top plank only, refer to Figure 3.

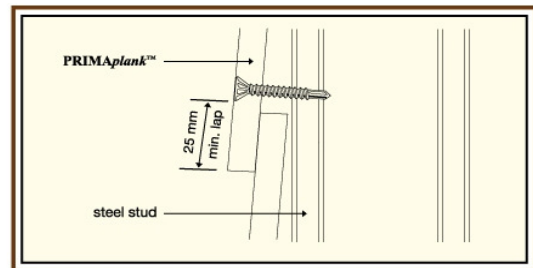


Figure 3: Fixing To Steel Frame

FIRE

PRIMAplank™ has been tested by CSIRO Australia to AS 1530.3 - 1989 and has achieved the following indices.

Ignitability Index	0
Spread of Flame Index	0
Heat Evolved Index	0
Smoke Developed Index	0 - 1



PRIMAplank™

JOINTS

PRIMAplank™ "off-stud" jointing method incorporates proprietary PVC jointer between planks ends. Joints must be staggered at minimum 600mm between each successive plank course. Ensure plank length is sufficient for fastening to at least two studs. Refer to Figure 4.

"On-stud" jointing can be done by butt jointing plank ends with the provision of 3mm gap. Seal gap with exterior grade paintable / flexible sealant which is compatible with concrete products. Joints should preferably be staggered. Refer to Figure 5.

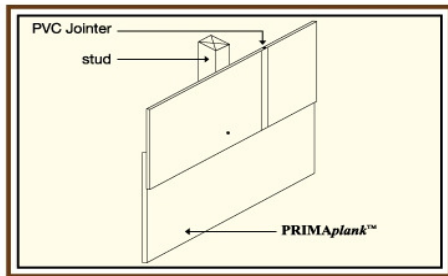


Figure 4: Off-stud Joint

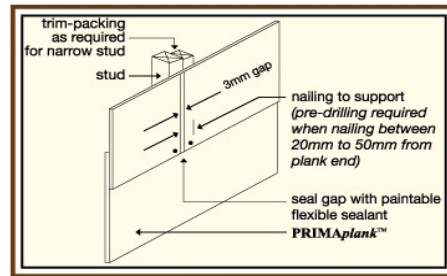


Figure 5: On-stud Joint

CORNERS

Internal and external corners may be finished with timber stops, proprietary metal corners or PVC corner mouldings (as illustrated in Figure 6 and Figure 7). Alternatively, when timber posts are utilized, planks ends can be abutted to the side of the posts. Provide 3mm gap and seal gap with flexible sealant.

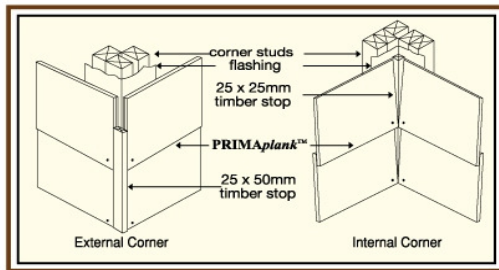


Figure 6: Timber Stop Corners

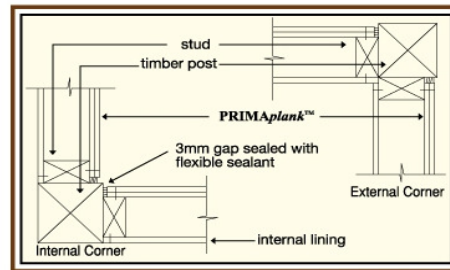


Figure 7: Timber Post Corners

FLASHING AND SARKING

It is a good building practice to apply flashing material at corners, above the head and under the sill of an opening prior to fixing any planks. Vapour permeable sarking (building paper) should be installed under **PRIMAplank™** siding board when desired or as required by local building regulations.

FINISHES

Under normal circumstances **PRIMAplank™** must be coated within 3 months after installation. For best result, paint **PRIMAplank™** with 2 coats of 100% water based quality acrylic paint. For general purpose applications, there is no requirement for primers or sealers. In all cases, coating manufacturer's recommendations must be strictly adhere to.

STANDARD SIZES AND MASS

PRIMAplank™ standard thickness is 7.5mm. Its mass at Equilibrium Moisture Content (EMC) of 7%, temperature at 27°C +/- 2°C with relative humidity of 65% to 95% is approximately 11kg/m².

PRIMAplank™ 7.5mm : External Siding Board		
Profile	Length (mm)	Width (mm)
Cedar	3660	209
Smooth / Woodgrain	4200	230 300

FASTENERS

Fasteners to Timber	Fasteners to Steel 0.55mm-0.75mm base metal thickness	Fasteners to Steel 0.80mm-1.60mm base metal thickness
<p>2.8mm ϕ x 40mm Galvanised fibre cement nails</p>	<p>No. 8 x 32mm Self-embedding head, self-drilling screws</p>	<p>No. 8 x 32mm Self-embedding head, self-drilling, wingteks screws</p>

Notes:

1. Fasteners must be suitably coated for exterior applications purposes.
2. Pre-drilling is required when nailing between 20mm to 50mm from the plank end.



PRIMAp™ Woodgrain



PRIMAp™ Smooth



PRIMAp™ Cedar



AS/NZS
2908.2

ASTM
C1186

Fire Resistance
AS 1530.3

Termite Resistance -
tested by CSIRO



CERTIFIED TO ISO 9001:2008
CERT. NO. : AR0430



CERTIFIED TO ISO 14001:2004
CERT. NO. : ER0642

WARRANTY

Hume Cemboard Industries Sdn Bhd ("the Company") warrants that it will at all times ensure that the products referred to herein ("the Products") shall be supplied by it to the purchaser free of any manufacturing defects and defective materials used in their manufacture. In the event and if contrary to this assertion the Products proved to be defective, whether as a result of manufacturing defects or arising from the Company's use of defective materials, the Company will supply replacement Products. The Company shall however have the option and may choose to reimburse the purchaser the purchase price of the Products instead. The Company shall not be liable for any economic or consequential losses arising from any use of defective Products. This warranty shall be void unless the purchaser has, in its handling and installation of the Products, complied with the recommendations contained in this brochure and other good building practices expected of a reasonable purchaser.

ADVISORY NOTE

Successful installations of Hume Cemboard Industries Sdn Bhd's products depend on a large number of factors that are outside of the scope of this brochure. Particular design, detail, construction requirements and workmanship are beyond the control of Hume Cemboard Industries Sdn Bhd. As such, Hume Cemboard Industries Sdn Bhd's warranty does not extend to non-usability of products or damage to products arising from poor or defective designs or systems or poor quality of workmanship in installation of the products.

HEALTH AND SAFETY

Breathing in fine silica dust over time, usually a number of years, may cause bronchitis, silicosis and lung cancer. Wear protective clothing, eye protection (conforming to AS1337) and dust mask (P1 & P2).



No.12, Jalan Tandang, 46050 Petaling Jaya, Selangor Darul Ehsan, Malaysia.

Hotline (603) 7625 3880 Fax (603) 7625 3990 / 3991

exportHCl@humeceboard.com.my

www.primaboard.com



BIPP10GE05